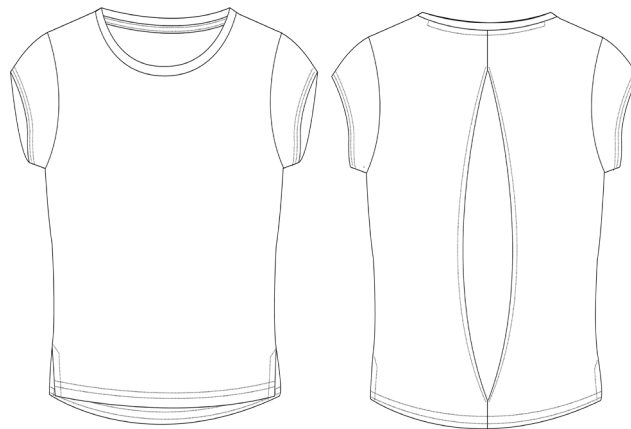


Style Code: JC013

Style Name: Women's open back T



Retail Copy:

A fresh take on the Womens Cool T, this fashion forward piece is simple yet stylish with an open back detail, perfect for the gym or any exercise.

Colours:	CMYK References	Sizes
Arctic White	White	XS-XL
Digital Lavender	53/56/4/0	XS-XL
Jet Black	73/67/61/67	XS-XL
Mint	27/2/13/0	XS-XL

Sizes to fit		
	XS	8
	S	10
	M	12
	L	14
	XL	16

Fabric Name: Neoteric

Fabric Content 100% Polyester

Fabric Weight: 140gsm

Carton Qty: 50

Pack Qty: 5

Key Features:

- AWDis' own lightweight Neoteric™ textured fabric with inherent wickability
- Relaxed fit
- Open back design feature
- Set in sleeve design
- Self-fabric crew neck
- Self-fabric taped back neck
- Twin needle stitching detail
- Simple tear off label makes it perfect for rebranding
- UPF 30+ UV protection



Wash Care Instructions

