

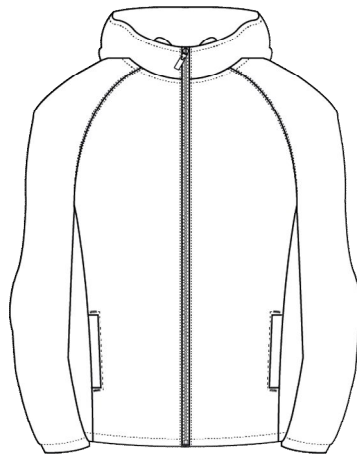
# Just Cool® AWDis

NEW STYLE 2025

Just Cool Product Specification 2025  
Issue 1

**Style Code:** JC282

**Style Name:** Active Track Jacket



**Retail Copy:**

Our Active Track jacket uses a lightweight, quick dry fabric and has great functional details like zipped pockets, hood toggles and hem toggles to allow maximum performance. Pair this with our Active Track Pant!

**Colours:**  
Jet Black

**CMYK References**  
73/67/61/67

**Sizes**  
XS-3XL

**Sizes to fit**

|     |           |
|-----|-----------|
| XS  | 35"-36"   |
| S   | 37"-39"   |
| M   | 39"-41"   |
| L   | 41" - 43" |
| XL  | 43"-45"   |
| XXL | 45"- 48"  |
| 3XL | 48" - 50" |

**Fabric Name:** N/A

**Fabric Content** 60% Polyester, 40% Recycled Polyester

**Fabric Weight:** 110gsm

**Carton Qty:** 20

**Pack Qty:** 5

**Key Features:**

- Relaxed fit
- Wicking quick dry fabric
- Raglan sleeves
- Elasticated cuffs
- 3 panel Hood
- Zip front pockets
- Hood adjustment toggles
- Hem adjustment toggles
- Tear Away Label

**Icons:**



**Wash Care Instructions**

