



TK002

## B&C #E190 /kids



### Composition

100% pre-shrunk, ring-spun cotton (investing in Better Cotton\*)

\* By choosing our cotton products, you're supporting our investment in Better Cotton's mission

### Size

3-4, 5-6, 7-8, 9-11, 12-13

### Packing

10 pcs/pack & 100 pcs/carton

### Weight

185 g/m<sup>2</sup>

### Color Note

Sport Grey: 85% pre-shrunk ring-spun cotton /15% viscose

### Details

Our kids' t-shirts are built to last. The B&C #E190 /kids is a durable, modern tee with a gender-neutral look, for boys and girls from kid to teen, perfect for everyday wear. Made from our legendary, sustainable #E190 single jersey, it is incredibly soft and comfortable, a great choice for active kids. Neck label free, it is perfectly printable too #premiumprinting. Its wide size range from toddler to teen, completes the B&C #E190 styles, now available for everyone from 3 to 99! Pair it with adult B&C #E190 styles for coordinated looks.

### #Features

Engineered for boys & girls (gender-neutral), from kid to teen #inclusive

Tubular construction #movement

Thin collar rib for modern appearance #uptodate

Back nektape for a clean finish #comfort

Available in 12 colours and 5 sizes (3/4 to 12/13)

Matching adult style, from 15 yrs+: B&C #E190

### #Quality/Handfeel

100% cotton #protectmyskin #Oeko-Tex100

Resistant fabric and soft handfeel #ringspun

Proven B&C quality fabric #20years

Middle weight fabric #whatevertheweather

"B&C No Label" solution for easy rebranding #customise

### #Sustainability

B&C, now sourcing 100% more sustainable fibres

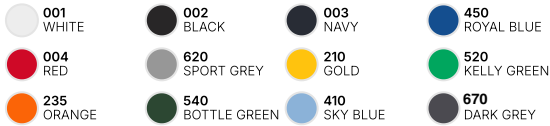
Supporting responsible cotton production through Better Cotton\*

Recyclable at end of life

\* This product is sourced via a system of mass balance and therefore may not contain Better Cotton.



### Colors



Want the same style for everyone?

**Try the B&C #E190**

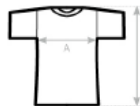
### Sustainability



### Care instructions



All our products are tested and approved using all main print techniques.



B&C #E190 /KIDS TK002	1/2	3/4	5/6	7/8	9/11	12/13
	80-92	98-104	110-116	122-128	134-146	152-164
A HALF CHEST	-	30	33	36	39,5	43
B BODY LENGTH FROM NECK POINT	-	45	48	51	54,5	58