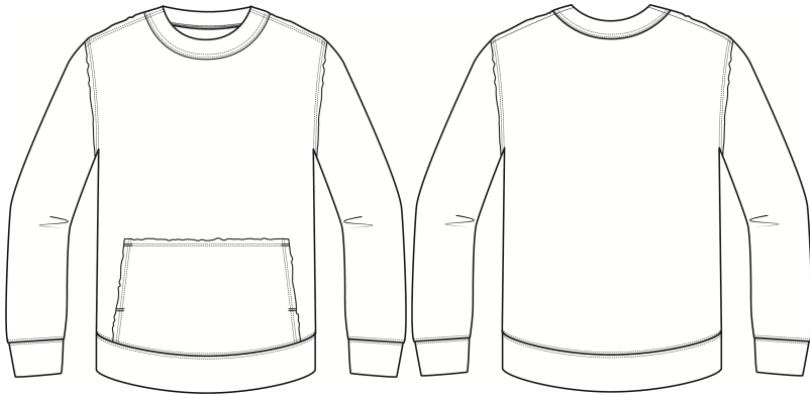


BELLA + CANVAS®

MEASUREMENT SPECIFICATION REPORT



STYLE # 3743 - UNISEX RAW SEAM CREW PULLOVER

FABRICATION

30/1 52% AIRLUME COMBED AND RING-SPUN COTTON, 48% POLYESTER

Points of Measurement (inches)

| | XS | S | M | L | XL | 2XL |
|----------------------|--------|--------|--------|--------|--------|--------|
| Body Length From HPS | 27 1/4 | 28 1/4 | 29 1/4 | 30 1/4 | 31 1/4 | 32 1/4 |
| Chest | 18 3/4 | 20 3/4 | 23 1/4 | 25 1/4 | 27 1/4 | 29 1/4 |

Disclaimer: Please note that the above sizing chart is subject to change. For more detailed information, please contact a Bella + Canvas Customer Service Representative.

BE DIFFERENT

AIRLUME JERSEY | NO SWEATSHOPS | WRAP CERTIFIED | RETAIL QUALITY



BELLACANVAS.COM | 6670 FLOTILLA STREET | LOS ANGELES, CA 90040 | 855 363 2200 | SALES@ BELLACANVAS.COM