

PROACT.®

REFERENCE : PA483

SIZES : XS_S_M_L_XL_XXL

COMPOSITION :

Main fabric : Polyester Cool Plus / Polyester interlock 50/50 - 145 100%polyester

WEIGHT :

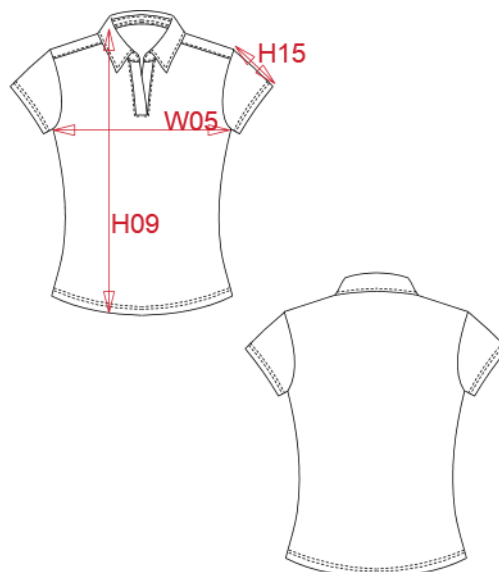
Main fabric : 145 gsm

TECHNICAL DETAIL :

Moisture control fabric

ARTICLE WEIGHT :

100gr/pc



DESCRIPTION	
Français :	Polo femme respirant à séchage rapide
English :	Ladies performance polo
Nederlands :	Ademende en sneldrogende damespolo
Deutsch :	Schnell-Trockendes-Atmungsaktives Polohemd für Damen
Español :	Polo transpirable de secado rapido para mujer
Italiano :	Polo donna asciugatura rapida
Português :	Polo de senhora de desporto

COLORS	PANTONE SERIGRAPHIE
White	White
Black	Black
Red	200C
Navy	433C
Fine grey	877C
Orange	1585C
Lime	367C
Aqua blue	7690C
True Yellow	116C
Fuchsia	7425C

MEASUREMENT							
Description	XS	S	M	L	XL	XXL	
H09 (L) Hauteur totale devant / Front total height	61	63	65	67	69	71	
W05 (L) 1/2 largeur poitrine à 1.5cm de l'emmanchure / 1/2 chest width at 1.5cm below armhole	41	44	47	50	53	56	
H15C (L) Longueur manche courte / Short sleeve length	12	12,75	13,50	14,25	15	15,75	

CARE LABEL				

PACKING	
Box	25 pcs / box XS => L:42cm W:34cm H:14cm GW:3.50kg NW:2.80kg S => L:42cm W:35cm H:14cm GW:3.90kg NW:2.70kg M => L:42cm W:35cm H:14cm GW:4.10kg NW:2.90kg L => L:46cm W:35cm H:16cm GW:4.30kg NW:3.10kg XL => L:46cm W:35cm H:16cm GW:4.50kg NW:3.30kg XXL => L:56cm W:36cm H:14cm GW:5.00kg NW:4.00kg