

KARIBAN

REFERENCE : KV2206

SIZES : S_M_L_XL_XXL_3XL

COMPOSITION :

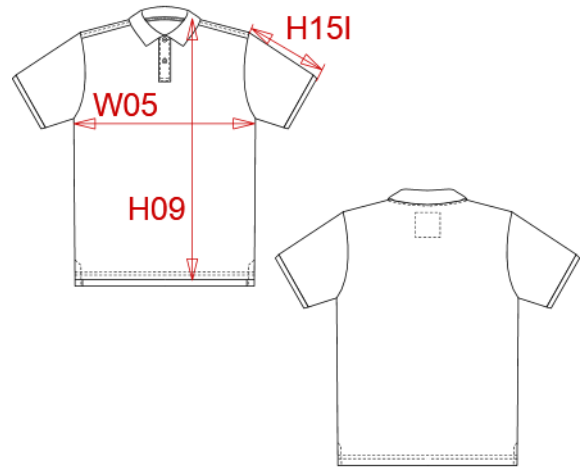
Main fabric : Combed cotton pique - 220 100%cotton
Main fabric : Combed cotton / viscose pique 98/2 - 220 98% cotton / 2%viscose

WEIGHT :

Main fabric : 220 gsm
Main fabric : 220 gsm

ARTICLE WEIGHT :

260 gr/pc



| DESCRIPTION |
|--|
| Français : Polo vintage manches courtes homme |
| English : Men's vintage short sleeve polo shirt |
| Nederlands : Vintage herenpolo met korte mouwen |
| Deutsch : Kurzarm-Polohemd für Herren im Vintage-Stil |
| Español : Polo vintage manga corta hombre |
| Italiano : Polo uomo vintage manica corta |
| Português : Polo vintage de homem de manga curta |

| COLORS | PANTONE SERIGRAPHIE |
|--------------------|-----------------------|
| Vintage navy | 533C |
| Vintage charcoal | 447C |
| Vintage dark red | 202C |
| Ash heather | Based on Warm gray 1C |
| Slub grey heather | Based on 7539C |
| Night blue heather | Based on 432C |

| MEASUREMENT | | | | | | |
|---|-------|-------|----|-------|-------|-------|
| Description | S | M | L | XL | XXL | 3XL |
| H09 (M) Hauteur totale devant / Front total height | 69 | 71 | 73 | 75 | 77 | 79 |
| W05 (M) 1/2 largeur poitrine / 1/2 chest width | 50 | 53 | 56 | 59 | 62 | 65 |
| H15I (M) Longueur manche avec bord côte / Sleeve length with rib | 20,50 | 21,25 | 22 | 22,75 | 23,50 | 24,25 |

| CARE LABEL |
|------------|
| |

| PACKING | |
|---------|--|
| Box | 30 pcs / box S => L:60cm W:40cm H:18cm GW:8.1kg NW:6.9kg M => L:60cm W:40cm H:18cm GW:8.8kg NW:7.6kg L => L:60cm W:40cm H:18cm GW:9.4kg NW:8.2kg XL => L:60cm W:40cm H:18cm GW:10kg NW:8.8kg XXL => L:60cm W:40cm H:20cm GW:10.3kg NW:9.3kg 3XL => L:60cm W:40cm H:20cm GW:10.9kg NW:9.9kg |