

KARIBAN

REFERENCE : K232

SIZES : S_M_L_XL_XXL_3XL

COMPOSITION :

Main fabric : Polyester / Combed Cotton pique 65/35 - 220
65%polyester / 35%cotton

Main fabric : Polyester / Combed Cotton pique 65/35 - 220 For
contrasted yokes 65%polyester / 35%cotton

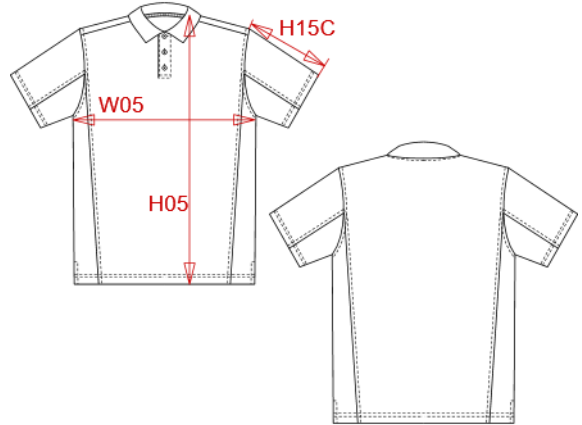
WEIGHT :

Main fabric : 220 gsm

Main fabric : 220 gsm

ARTICLE WEIGHT :

300 gr/pc



DESCRIPTION								COLORS		PANTONE SERIGRAPHIE	
Français : Polo bicolore								White / Red	White / 200C		
English : Bi-colour short sleeve polo shirt								Navy / White	433C / White		
Nederlands : Tweekleurige polo								White / Royal blue	White / 287C		
Deutsch : Zweifarbiges polohemd								Red / Black	200C / Black		
Español : Polo piqué bicolor								Black / Lime	Black / 367C		
Italiano : Polo bicolore								Navy / Sky blue	433C / 5425C		
Português : Polo pique bicolor								Black / Slate grey	Black / 424C		
MEASUREMENT								Black / Orange	Black / 1585C		
Description	S	M	L	XL	XXL	3XL		Navy / Deep pink	433C / 1905C		
H05 (M) Hauteur totale / Total height	70	72	74	76	78	80		Light grey / Red	416C / 200C		
W05 (M) 1/2 largeur poitrine / 1/2 chest width	50	53	56	59	62	65		Dark grey / Orange	447C / 1585C		
H15C (M) Longueur manche courte / Short sleeve length	22,25	23	23,75	24,50	25,25	26					
CARE LABEL											
PACKING											
Box	25 pcs / box S-M => L:54cm W:37cm H:17cm GW:9.40kg NW:7.60kg L-XL => L:58cm W:38cm H:17cm GW:10.40kg NW:8.60kg XXL-3XL => L:60cm W:40cm H:18cm GW:11.20kg NW:9.40kg										