

# KARIBAN

**REFERENCE :** K582

**SIZES :** S\_M\_L\_XL\_XXL\_3XL\_4XL

**COMPOSITION :**

Main fabric : Bonded polyester micro polarfleece / polyester sherpa - 360 1st color for outer layer

2nd color for inner layer 100%polyester

Fabric 1 : Polyester micropolar fleece - 170 For under collar, inner collar band, under pocket flaps, inner cuffs and sleeve tabs 100%polyester

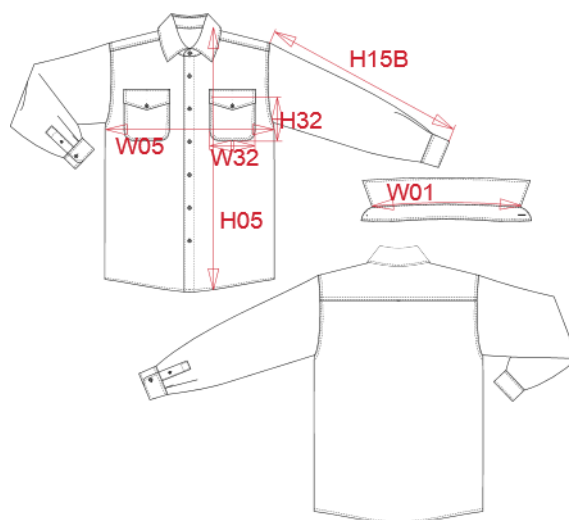
**WEIGHT :**

Main fabric : 360 gsm

Fabric 1 : 170 gsm

**ARTICLE WEIGHT :**

640 gr/pc



DESCRIPTION
<b>Français :</b> Surchemise polaire doublée sherpa
<b>English :</b> Sherpa-lined fleece overshirt
<b>Nederlands :</b> Overhemd van fleece met sherpavoering
<b>Deutsch :</b> Fleece-Hemdjacke mit Sherpa-Futter
<b>Español :</b> Sobrecamisa polar con forro de sherpa
<b>Italiano :</b> Giacca-camicia in pile foderata in sherpa
<b>Português :</b> Camisa polar com forro em sherpa

COLORS	PANTONE SERIGRAPHIE
Navy / Storm grey	433C / 425C
Dark khaki / Storm grey	418C / 425C

MEASUREMENT							
Description	S	M	L	XL	XXL	3XL	4XL
<b>W01 (M)</b> Longueur encolure / Neckline length	41,75	43	44,25	45,50	46,75	48	49,25
<b>H05 (M)</b> Hauteur totale / Total height	75,50	77,50	79,50	81,50	83,50	85,50	87,50
<b>W05 (M)</b> 1/2 largeur poitrine / 1/2 chest width	54	57	60	63	66	69	72
<b>H15B (M)</b> Longueur manche avec poignet / Sleeve length with cuff	66	67	68	69	70	71	72
<b>H32 (M)</b> Hauteur poche devant / Front pocket height	13	13	14	14	15	15	15
<b>W32 (M)</b> Largeur poche devant / Front pocket width	12	12	13	13	14	14	14

CARE LABEL

PACKING	
Box	10 pcs/box S => L:60cm W:40cm H:27cm NW:5kg GW:6.5kg M => L:60cm W:40cm H:27cm NW:5.5kg GW:7kg L => L:60cm W:40cm H:27cm NW:6kg GW:7.5kg XL => L:60cm W:40cm H:29cm NW:6.5kg GW:8kg XXL => L:60cm W:40cm H:29cm NW:7kg GW:8.5kg 3XL => L:60cm W:40cm H:29cm NW:7.5kg GW:9kg 4XL => L:60cm W:40cm H:29cm NW:8kg GW:9kg