

## PR118 All Purpose Waterproof Gown

### Description

A great wipe down coverall suitable for staff working across many different industries. Relatively straight fitting to the body with two open pockets to the side for carrying tools of the trade. Long sleeves finished with elasticated cuffs enables freedom of movement. Two points of fastening to the reverse on the neck and centre back secure this all-purpose gown in place.

### Product Features:

- Waterproof and bleach resistant.
- Adjustable tear release fastening.
- Elasticated cuffs.

### Available In:

S/M, L/XL

### Certifications:

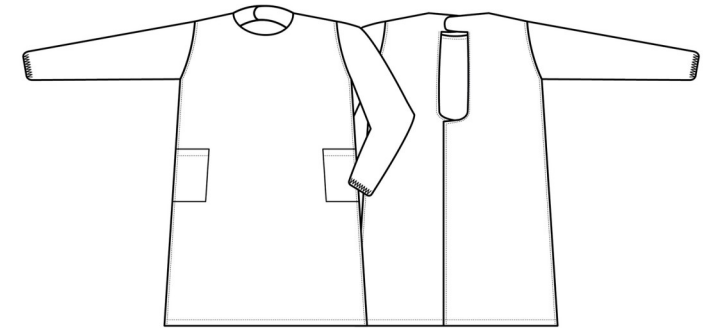


### Colours:

Colour	Pantone	C	M	Y	K
Black	Black c	0	0	0	100
Dark Grey	425c	52	29	30	78
Navy	533c	95	72	15	67

### Fabric:

100% Polyester with Polyurethane coating, 110gsm.



### Suggested Decoration:

Screen Print, Transfer Print, Embroidery

### Country of Origin:

Bangladesh

### Commodity Code:

6211 43 1000

### Features:



### Wash Care:



### Carton Information:

Sizes	Carton	Pack	SKU's	Carton Weight	Carton Dimentions
All Sizes	36	6	6	8kg	60cmx40cmx20cm

### Garment Sizes:

99cm long

Chest to fit"	32/36	40/44
Chest to fit cm	84/92	100/112