

PR121 'Barley' Contrast Stitch Sustainable Bib Apron

Description

An eco-friendly bib apron, made with a combination of recycled polyester and sustainable cotton. Featuring two handy side pockets with rivet detail. The centre zip pocket comes away to the underside to allow embroidery applications. Contrast stitching features across this apron and oversized antique brass eyelets and adjustable buckle give an industrial - chic feel to the design.

Product Features:

- Eyelet and rivet detail.
- Contrast stitching.
- Side pockets and centre zipped pocket.
- Adjustable antique brass buckle on neckband.

Sustainable Features:

- Made from sustainable cotton
- Recycled polyester from post-consumer plastic.
- Eco-friendly uniform solution.

Available In:

One Size

Certifications:



Colours:

| Colour | Pantone | C | M | Y | K | |
|----------------|----------|---------|----|----|----|-----|
| Black/Charcoal | Black | Black c | 0 | 0 | 0 | 100 |
| | Charcoal | 7540c | 41 | 28 | 22 | 70 |
| Khaki/Brown | Khaki | 7536c | 11 | 13 | 30 | 32 |
| | Brown | 4975c | 36 | 84 | 59 | 85 |
| Navy/Camel | Navy | 533c | 95 | 72 | 15 | 67 |
| | Camel | 2318c | 29 | 52 | 72 | 15 |
| Olive/Chestnut | Olive | 7763c | 46 | 26 | 84 | 66 |
| | Chestnut | 7581c | 0 | 64 | 70 | 60 |

Fabric:

65% Recycled Polyester, 35% Sustainable Cotton, 195gsm.

Suggested Decoration:

Screen Print, Transfer Print, Embroidery

Country of Origin:

Bangladesh

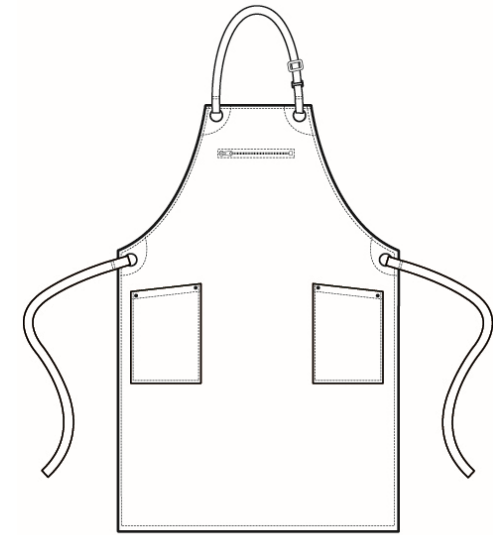
Commodity Code:

6211431000

Features:



Wash Care:



Carton Information:

| Sizes | Carton | Pack | SKU's | Carton Weight | Carton Dimensions |
|-----------|--------|------|-------|---------------|--------------------|
| All Sizes | 72 | 6 | 4 | 15kg approx | 60cm x 40cm x 24cm |

Garment Sizes:

86cm long x 72cm wide with 90cm long ties.
Two slanted side pockets measuring 24cm depth by 17cm wide.

This garment can withstand a high wash temperature, but unless heavily soiled, we recommend washing at 30C to help the environment.