

PR122 'Regenerate' Sustainable Bib Apron

Description

Made entirely from regenerated denim and woven on hand looms in a low carbon powered factory, this cotton apron has a great sustainable story to tell! The fleck effect is testimony to the recycled denim fabrics that this apron was made from. Featuring two slanted side pockets with contrast trim and a knotted neckband that can be adjusted for height. Super soft to touch with a linen feel.

Product Features:

- Slanted side pockets with contrast trim.
- Adjustable knotted neckband.
- Contrast stitching.

Sustainable Features:

- Recycled cotton from used denim.
- Recycled Polyester from post - consumer plastic.
- Manufactured in a low carbon powered factory.
- Eco-friendly uniform solution.

Available In:

One Size

Certifications:



Colours:

| Colour | Pantone | C | M | Y | K |
|--------------|---------------|----|----|----|----|
| Black Denim | 426c | 94 | 77 | 53 | 94 |
| Indigo Denim | 2380c | 91 | 71 | 36 | 56 |
| Grey Denim | Cool grey 10c | 40 | 30 | 20 | 66 |
| Natural* | 4755c | 3 | 16 | 20 | 9 |

Fabric:

Natural Denim: 44% Recycled Cotton, 37% Recycled Polyester, 19% Recycled Viscose. 275gsm.

Grey Denim: 55% Recycled Cotton, 36% Recycled Polyester, 9% Recycled Viscose. 275gsm.

Black Denim: 53% Recycled Cotton, 41% Recycled Polyester, 6% Recycled Viscose. 275gsm.

Indigo Denim: 58% Recycled Cotton, 36% Recycled Polyester, 6% Recycled Viscose. 275gsm.

Suggested Decoration:

Embroidery

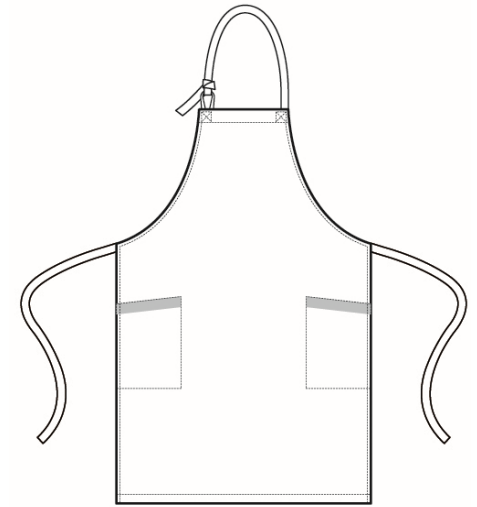
Country of Origin:

India

Commodity Code:

6211421000

Features:



Wash Care:



Carton Information:

| Sizes | Carton | Pack | SKU's | Carton Weight | Carton Dimensions |
|-----------|--------|------|-------|---------------|--------------------|
| All Sizes | 36 | 6 | 4 | 15kg approx | 60cm x 40cm x 22cm |

Garment Sizes:

86cm long x 72cm wide with 90cm long ties.

Two slanted side pockets measuring 23cm depth by 17.5cm wide.

This garment can withstand a high wash temperature, but unless heavily soiled, we recommend washing at 30C to help the environment.