

PR338 Women's Cotton Rich Oxford Stripes Shirt

Description

This Oxford style is designed with narrow vertical stripes for a touch of high street inspiration. As you'd expect, this iconic style features the classic button-down collar on the underside with double buttons to the cuff. Choose to wear more casually with an open collar and roll-back sleeves and a flash of contrast fabric becomes visible on the inner neckband and inside cuff.

Product Features:

- Buttoned down collar on the underside
- Semi-fitted styling with bust and back darts
- Contrast colour to inner neckband and cuff.
- Two button cuff and single button sleeve guard
- Curved hem

Available In:

XS, S, M, L, XL, 2XL

Certi-



amfori BSCI
Member of amfori, the leading business association for open and sustainable trade. For more information visit www.amfori.org

Sedex

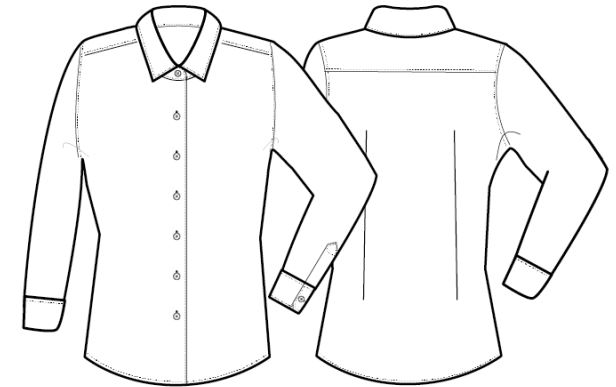


Colours:

Colour	Pantone	C	M	Y	K
Oxford Blue	7451C	46	23	0	0
White/ Grey	White	0	0	0	0
	Grey	424C	30	20	19
White/ Navy	White	0	0	0	0
	Navy	2378C	83	63	26
White/ Oxford Blue	White	0	0	0	0
	Oxford Blue	7451C	46	23	0
White/ Pink	White	0	0	0	0
	Pink	671C	3	28	0

Fabric:

60% Cotton, 40% Polyester Oxford Stripe, 135gsm.



Suggested Decoration:

Screen Print, Transfer Print, Embroidery

Country of Origin:

Bangladesh

Commodity Code:

6206 30 0000

Features:



EASY CARE

MODERN FIT

Wash Care:



Carton Information:

Sizes	Carton	Pack	SKU's	Carton Weight	Carton Dimensions
All Sizes	24	6	30	7.5kg	56cmx38cmx16cm

Garment Sizes:

Size	8	10	12	14	16	18
Bust to fit"	33	35	37	39	41	43
Bust to fit cm	84	89	94	99	104	109
Bust actual cm	96	101	106	110	116	121
Coll size	XS	S	M	L	XL	2XL
Back length cm	66	67	68	69	70	71