

## PR350 'Mulligan' Check-Women's Long Sleeve Cotton Shirt

### Description

A checked shirt is the ultimate versatile addition to your wardrobe. Wear relaxed and open collared with the sleeves rolled back, or take a smart-casual approach and wear long sleeved with a buttoned cuff. However you choose to style our 'Mulligan' checked shirt, it's an eye-catching piece of workwear which will really elevate your look.

### Product Features:

- Roll sleeve option with button and tab fastening on the upper arm
- Double button cuff for full sleeve option
- Narrow soft collar styling
- Bust and back darts

### Available In:

XS, S, M, L, XL, 2XL

### Certifications:

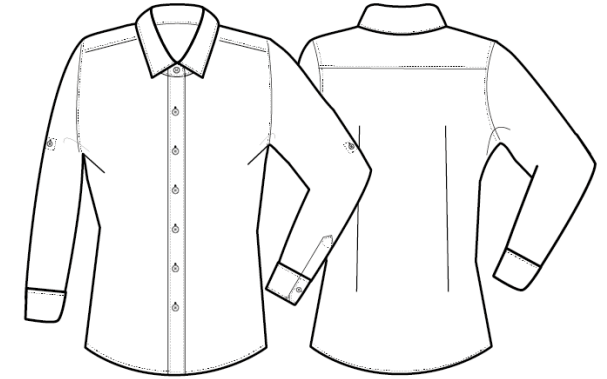


### Colours:

| Colour       |       | Pantone       | C  | M   | Y  | K   |
|--------------|-------|---------------|----|-----|----|-----|
| Camel/ Navy  | Camel | 2318c         | 29 | 52  | 72 | 15  |
|              | Navy  | 533c          | 95 | 72  | 15 | 67  |
| Red/ Navy    | Red   | 201c          | 7  | 100 | 68 | 32  |
|              | Navy  | 533c          | 95 | 72  | 15 | 67  |
| Steel/ Black | Steel | Cool grey 11c | 44 | 34  | 22 | 77  |
|              | Black | Black c       | 0  | 0   | 0  | 100 |
| White/ Navy  | White | White         | 0  | 0   | 0  | 0   |
|              | Navy  | 533c          | 95 | 72  | 15 | 67  |

### Fabric:

100% Cotton, Yarn Dyed Poplin, 115gsm.



### Suggested Decoration:

Screen Print, Transfer Print, Embroidery

### Country of Origin:

Bangladesh

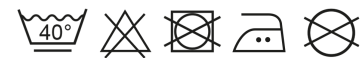
### Commodity Code:

6206 30 0000

### Features:



### Wash Care:



### Carton Information:

| Sizes     | Carton | Pack | SKU's | Carton Weight | Carton Dimensions |
|-----------|--------|------|-------|---------------|-------------------|
| All Sizes | 24     | 6    | 24    | 8kg           | 56cmx36cmx15cm    |

### Garment Sizes:

| Size                  | 8  | 10 | 12  | 14  | 16  | 18  |
|-----------------------|----|----|-----|-----|-----|-----|
| <b>Bust to fit"</b>   | 33 | 35 | 37  | 39  | 41  | 43  |
| <b>Bust to fit cm</b> | 84 | 89 | 94  | 99  | 104 | 109 |
| <b>Bust actual cm</b> | 92 | 97 | 102 | 107 | 112 | 117 |
| <b>Call size</b>      | XS | S  | M   | L   | XL  | 2XL |
| <b>Back length cm</b> | 65 | 66 | 67  | 68  | 69  | 70  |