

## PR402 'Essential' Acrylic Women's Cardigan

### Description

A simple easy wearing cardigan for ladies that adds layers of style to your outfit. Designed with ribbed knit set-in sleeves, hem line and V-neck for a contemporary modern look. Self-coloured button-through style. A wardrobe essential for staff who need to maintain a smart corporate image at all times.

### Product Features:

- Ribbed knit neck, hem and cuffs
- Contemporary V-neck styling
- Fine knit
- Self-coloured buttons

### Available In:

8, 10, 12, 14, 16, 18, 20, 22, 24, 26

### Certifications:

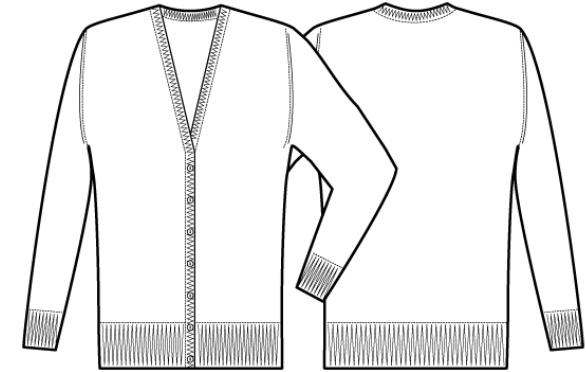


### Colours:

Colour	Pantone	C	M	Y	K
Black	Black c	0	0	0	100
Navy	533c	95	72	15	67

### Fabric:

100% Acrylic. 12 gauge knit.



### Suggested Decoration:

Embroidery

### Country of Origin:

Bangladesh

### Commodity Code:

6110 30 9900

### Features:

**EASY CARE**

### Wash Care:



### Carton Information:

Sizes	Carton	Pack	SKU's	Carton Weight	Carton Dimensions
All Sizes	18	3	20	6.5kg	60cmx40cmx20cm

### Garment Sizes:

Size	8	10	12	14	16	18	20	22	24	26
Bust to fit"	33	35	37	39	41	43	45	47	49	51
Bust to fit cm	84	89	94	99	104	109	114	119	124	129
Bust actual cm	92	96	100	104	108	113	118	123	128	133
Call size	XS	S	M	L	XL	2XL	3XL	4XL	5XL	6XL
Back length cm	59	60	61	62	63	64	65	66	67	68