

## PR553 'Essential' Chef's Trousers

### Description

Pull-on chef's trousers in available in plain and checked pattern. The elasticated waist also has a drawstring for a more gathered, fitted style round the waist and there are two useful swing pockets to the side.

### Product Features:

- Elasticated waist
- Swing pockets
- Draw cord

### Available In:

XS, S, M, L, XL, 2XL, 3XL, 4XL\*, 5XL\*

### Certifications:



### Colours:

Colour	Pantone	C	M	Y	K	
Black/ White Check	Black	Black c	0	0	0	100
	White	White	0	0	0	0
Black *	Black c	0	0	0	100	

### Fabric:

65% Polyester, 35% Cotton Twill, 195gsm.

### Suggested Decoration:

Screen Print, Transfer Print, Embroidery

### Country of Origin:

Bangladesh

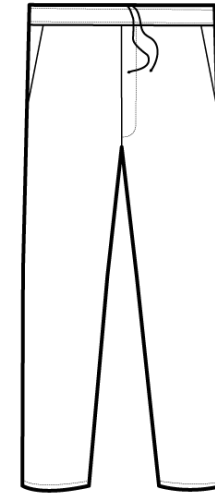
### Commodity Code:

6203431100

### Features:



### Wash Care:



### Carton Information:

Sizes	Carton	Pack	SKU's	Carton Weight	Carton Dimensions
All sizes	24	6	16	12.2kg approx.	58cmx38cmx20cm

### Garment Sizes:

Call Size	XS	S	M	L	XL	2XL	3XL	4XL	5XL
Waist to fit"	28-30	32-34	34-36	36-38	38-40	42-44	44-46	46-48	48-50
Waist to fit cm	71-76	81-86	86-91	91-96	96-101	106-111	111-116	116-126	126-136
Waist actual cm	72	84	96	108	120	132	144	156	166
DE,NL	36	38	42	44	46	50	54	58	60
FR,ES,PT	36	38	42	44	46	50	54	58	60
IT	42	44	46	48	50	52	54	56	58