

## PR622 Men's Lined Polyester Waistcoat

### Description

A men's waistcoat with five buttons and two functional watch pockets makes for a really stylish piece of hospitalitywear. This waistcoat is fully lined and comes with a satin-feel back where there is a buckle adjuster for a more fitted appearance.

### Product Features:

- Satin-feel back with adjuster
- Two functional watch pockets
- Five button fastening
- Fully lined

### Available In:

2XS, XS, S, M, L, XL, 2XL

### Certifications:

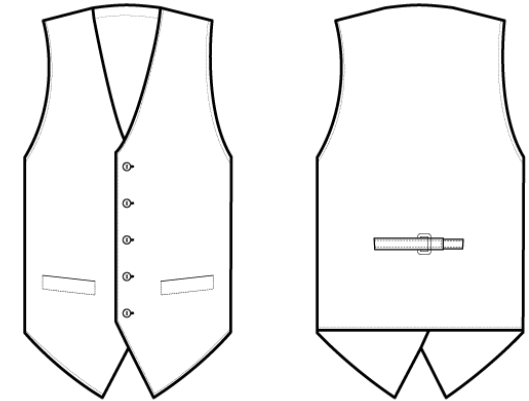


### Colours:

| Colour | Pantone | C | M | Y | K   |
|--------|---------|---|---|---|-----|
| Black  | Black c | 0 | 0 | 0 | 100 |

### Fabric:

100% Polyester Plain Weave, 185gsm.



### Suggested Decoration:

Screen Print, Transfer Print, Embroidery

### Country of Origin:

China

### Commodity Code:

6211 33 1000

### Features:



### Wash Care:



### Carton Information:

| Sizes     | Carton | Pack | SKU's | Carton Weight | Carton Dimensions |
|-----------|--------|------|-------|---------------|-------------------|
| All Sizes | 24     | 6    | 7     | 10kg approx.  | 60cmx40cmx22cm    |

### Garment Sizes:

| Call size       | 2XS | XS | S   | M   | L   | XL  | 2XL |
|-----------------|-----|----|-----|-----|-----|-----|-----|
| Chest to fit"   | 30  | 32 | 36  | 40  | 44  | 48  | 52  |
| Chest to fit cm | 66  | 76 | 86  | 96  | 106 | 116 | 126 |
| Chest actual cm | 82  | 92 | 102 | 112 | 118 | 126 | 134 |
| Back length cm  | 58  | 58 | 58  | 58  | 58  | 58  | 58  |