

PR626 Women's Herringbone Waistcoat

Description

An attractive, versatile waistcoat with for ladies. Styled with a lapel collar that leads into the main body of the waistcoat with four button fastening. The Herringbone pattern has been achieved by two coloured yarns being woven together. This waistcoat is fully lined on the underside and to the reverse where there is a buckle for the wearer to adjust accordingly.

Product Features:

- Satin-feel lining to the underside and reverse
- Lapel collar
- Front and back darts and adjusting buckle on the back for fitting
- Two front open pockets
- Four button fastening

Available In:

XS, S, M, L, XL, 2XL

Certifications:



Colours:

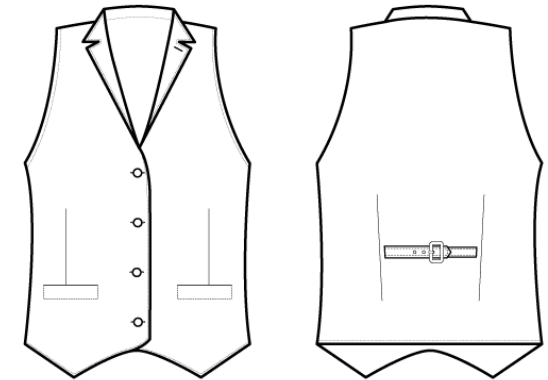
Colour	Pantone	C	M	Y	K
Brown Check	7519 C	24	42	45	68
Charcoal	7540c	41	28	22	70
Navy	533c	95	72	15	67

Fabric:

50% Polyester, 45% Wool, 5% mixed fibres. 300gsm.
Back & Lining: 100% Polyester Satin, 70gsm

Suggested Decoration:

Screen Print, Transfer Print, Embroidery



Country of Origin:

China

Commodity Code:

6211 49 0000

Wash Care:



Carton Information:

Sizes	Carton	Pack	SKU's	Carton Weight	Carton Dimensions
All Sizes	24	6	18	13kg	60cm x 40cm x 22cm

Garment Sizes:

Call size	XS	S	M	L	XL	2XL
Bust to fit"	29	32	34	37	40	44
Bust to fit cm	73	80	86	94	101	112
Bust actual cm	83	91	99	107	115	123
Back length cm	55	55	55	55	55	55