

## PR900 'Essential' Short Sleeve Chef's Jacket

### Description

A durable short sleeve chef's jacket that fastens down the right hand side of the body with five long life resin buttons. On the upper left sleeve there is a handy double pocket pen compartment. This jacket is styled with a mandarin collar and is available in Black and White and offers great value for money.

### Product Features:

- Five button wrap over fastening
- Long life resin buttons
- Double pen pocket
- Mandarin collar

### Available In:

XS, S, M, L, XL, 2XL, 3XL, 4XL

### Certifications:

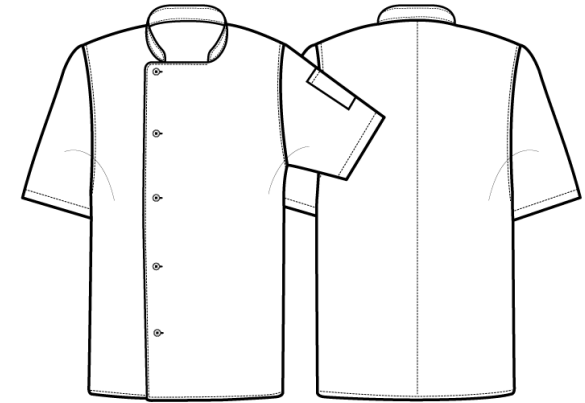


### Colours:

Colour	Pantone	C	M	Y	K
Black	Black c	0	0	0	100
White	White	0	0	0	0

### Fabric:

65% Polyester, 35% Cotton Twill, 170gsm.



### Suggested Decoration:

Screen Print, Transfer Print, Embroidery

### Country of Origin:

Bangladesh

### Commodity Code:

6211331000

### Features:



### Wash Care:



### Carton Information:

Sizes	Carton	Pack	SKU's	Carton Weight	Carton Dimensions
All Sizes	24	6	16	10kg approx	60cm x 40cm x 20cm

### Garment Sizes:

Call size	XS	S	M	L	XL	2XL	3XL	4XL
Chest to fit"	30	34	38	42	46	50	54	58
Chest to fit cm	77	87	96	107	117	126	136	146
Chest actual cm	96	104	112	120	128	136	144	152
Back length cm	76	76	76	76	76	76	76	76