

NEW STYLE



WOMEN POLOS
STPW333- STELLA ELLISER



The women's polo

Piqué
95% Organic ring-spun combed cotton, 5% Elastane
Fitted
200 GSM

- Set-in sleeve
- Flat knit rib on collar and sleeve hem
- Inside heavy single jersey back neck tape
- Front placket with 2 buttons in matching body colour
- Slit at side seams with heavy single jersey facing
- Single needle topstitch at shoulder seams
- Bottom hem with narrow double needle topstitch

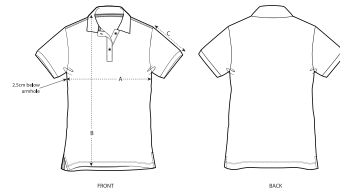
WHITES



COLORS

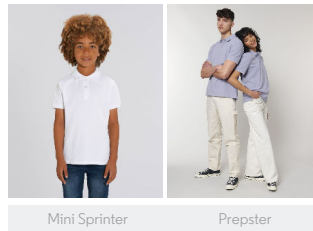


ESSENTIAL HEATHERS



SIZES	XXS	XS	S	M	L	XL	XXL	XXXL
A Half Chest	38.5	41	43.5	46.5	49.5	52.5	55.5	58.5
B Body Length	59	61	63	65	67	68	68	68
C Sleeve Length	16.5	17.5	17.5	18.5	18.5	19.5	19.5	20.5

Combo options



Printing Specifications

For suitable print techniques, please download our printing guide

Certifications & memberships



Wash Instructions

Wash similar colours together, no ironing on print, wash and iron inside out.

