



The men's sleeveless fleece jacket

Medium Fit

S 5XL*

0 GSM

Details

- Sleeveless
- Elastic binding at neck edge, armhole and hem
- Inside back neck grosgrain loop
- Nylon coil zipper with metal puller and cord ending
- Brushed fabric with Anti piling finish on inside and outside
- Front side welt pockets with zip opening
- Inside back neck tape in recycled polyester

Composition

Shell - Polar Fleece
 100% Polyester - Recycled -
 Brushed

Care

Wash similar colours together. No ironing. Close all
 snaps before washing. Line dry.



Country of origin

Weaving : China

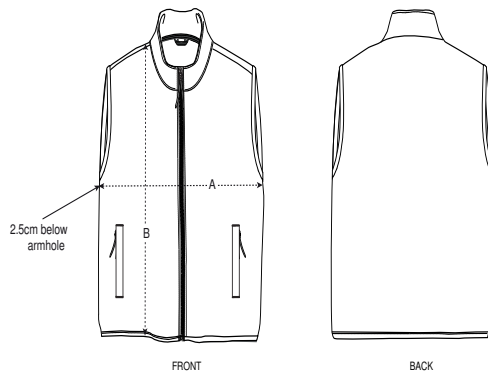
Dyeing : China

Assembly : Bangladesh

Colors



Size Guide



Sizes		S	M	L	XL	XXL	3XL	4XL	5XL
A	Half Chest	53	56	59	62	66	70	75	80
B	Body Length	68	70	72	74.5	76.5	79	80	81

Packing

Sizes	S	M	L	XL	XXL	3XL	4XL	5XL
Pieces/bag	5	5	5	5	5	5	5	5
Pieces/box	15	15	15	15	15	10	10	10